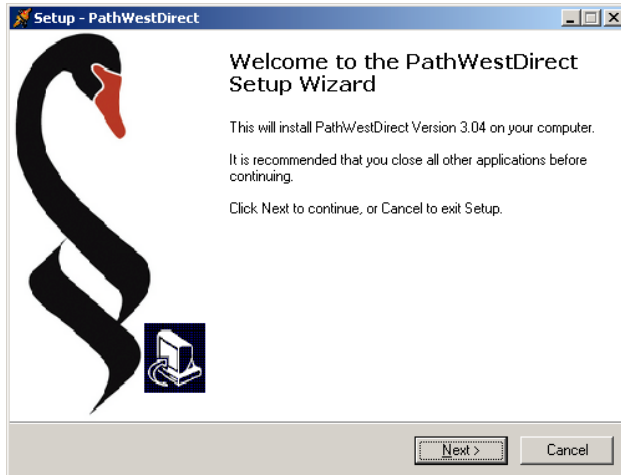


Client Installation Guide PathWest Direct

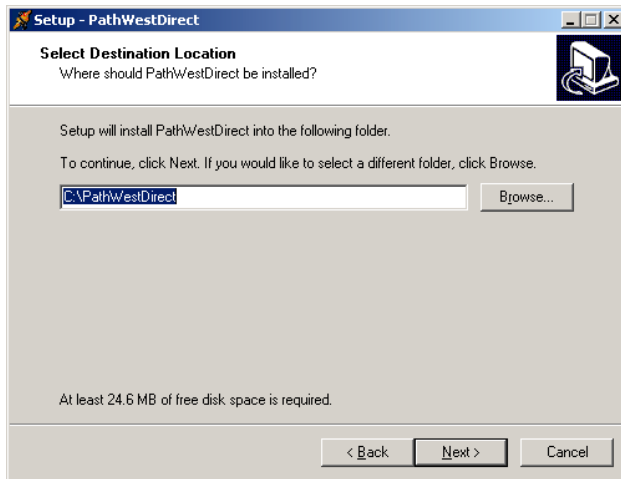
1. Download the executable file from the web page www.pathwestdirect.com.au. (If a self install CD is provided place this in the CD drive and the selfinstall wizard will start.)
2. Double click on the Pathwestdirect.exe file to start the install wizard the following screen is displayed.



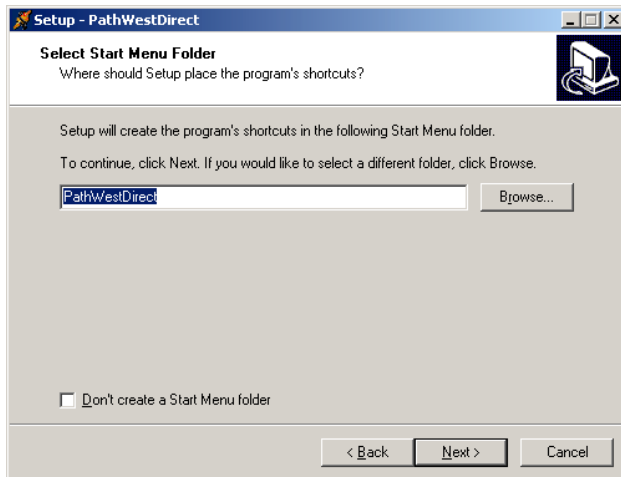
Click Next



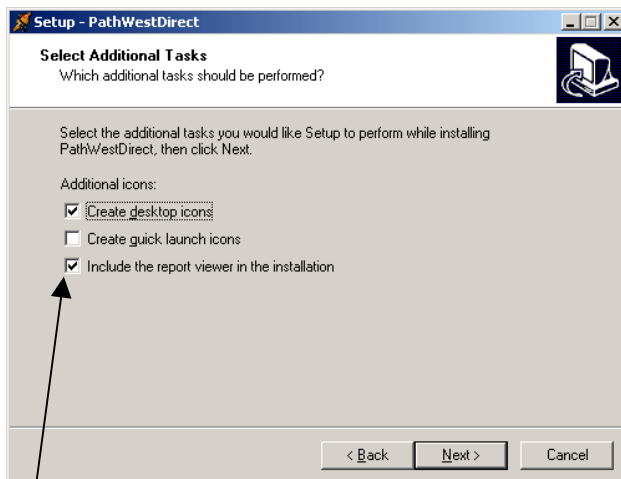
Read and accept the licence agreement and click on "Next" to continue installation



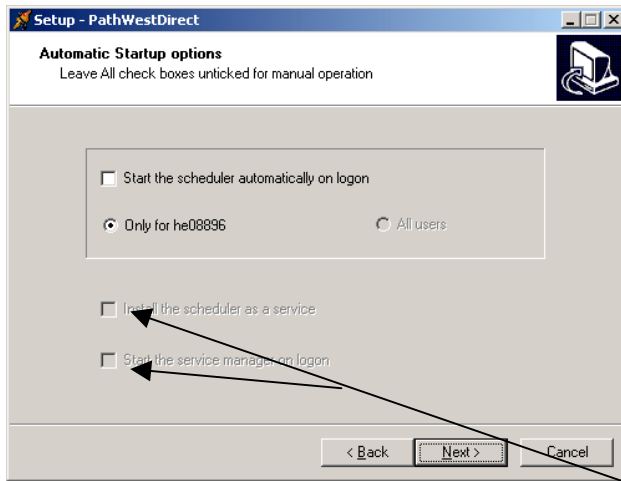
Click "Next" accepting the default directory or change the directory if required and click "Next".



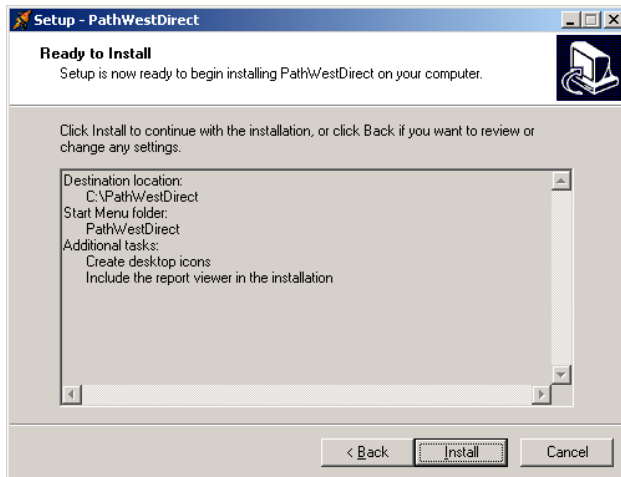
Click "Next" accepting the default directory or change the directory if required and click "Next".



Uncheck the "Include the report viewer in the installation box" and click "Next"



To run the scheduler as a service check the 2 boxes and select if this is to occur for all users or a single user then click "Next"



Check all details are correct (you can click the back button to correct any errors) then click "Install".



Once complete the above screen is displayed. Click "Finish".